

Installing the Adobe CC Desktop Application on a Personal macOS Device

Student User Guide

SWINBURNE UNIVERSITY OF TECHNOLOGY

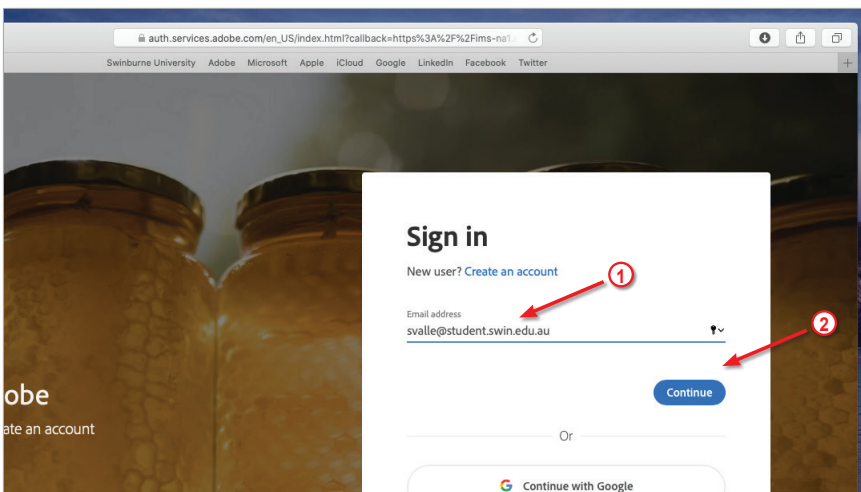
The purpose of this guide is to assist students in installing the Adobe Creative Cloud Desktop Application on a personal macOS device in order to download and use Adobe CC applications with their Swinburne provided Adobe ID

1



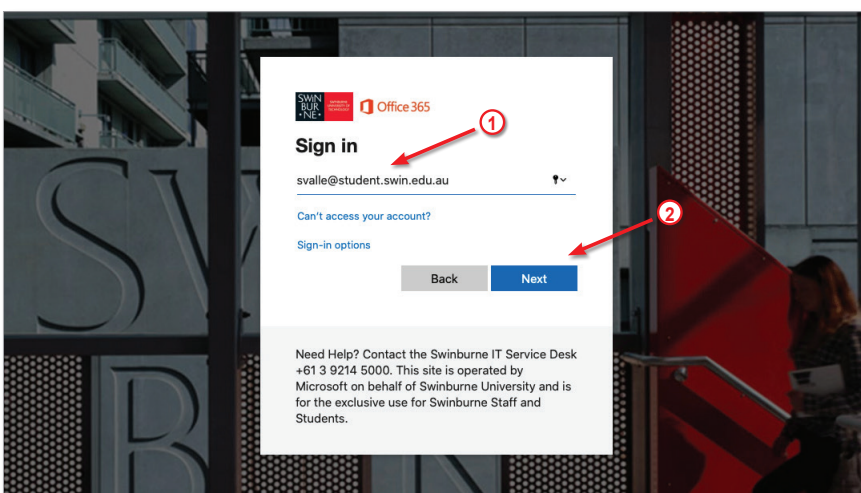
Open your preferred web browser and navigate to
<https://creativecloud.adobe.com/>

2



Enter your **Swinburne email address** in the space provided and click on the **Continue** button

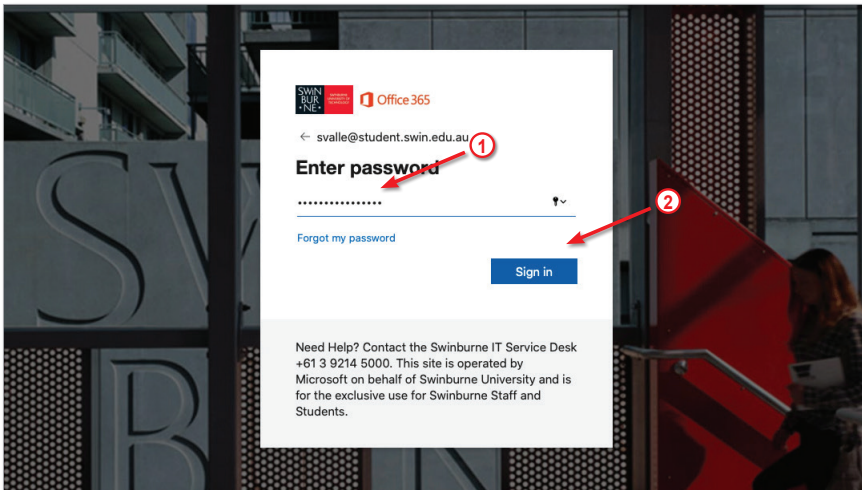
3



Adobe will recognise that your email address is associated with a Swinburne provided Adobe ID and redirect you to the Office 365 portal to sign in

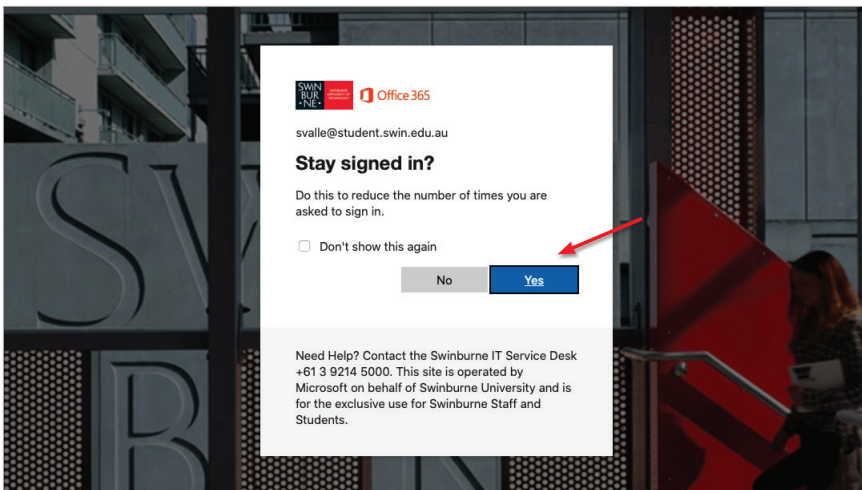
Enter your **Swinburne email address** in the space provided and click on the **Next** button

4

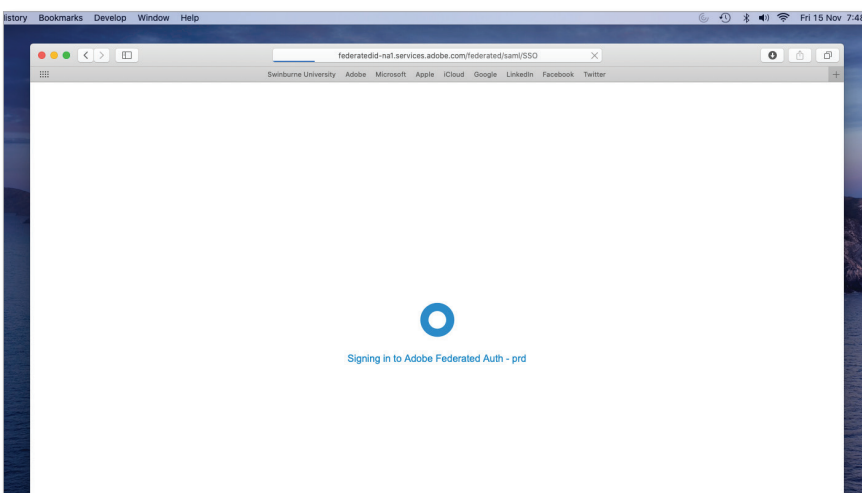


Enter your **password** in the space provided and click on the **Sign In** button

5

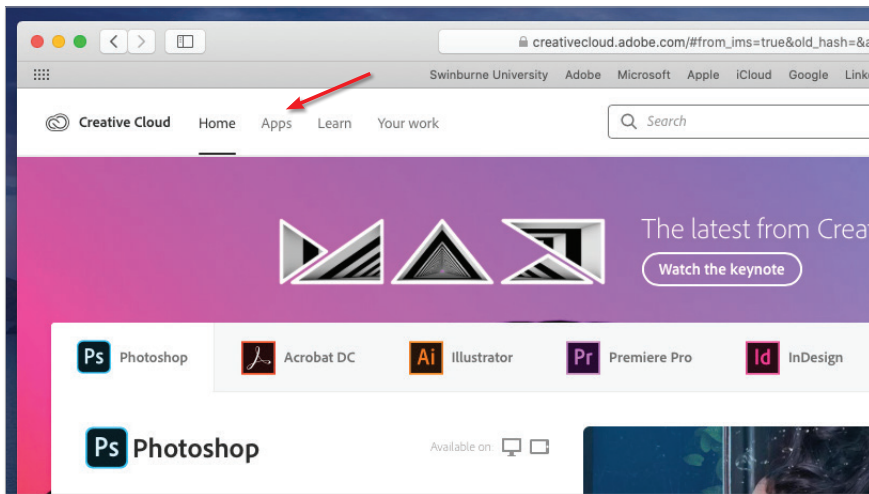


Select **Yes** to stay signed in to Office 365



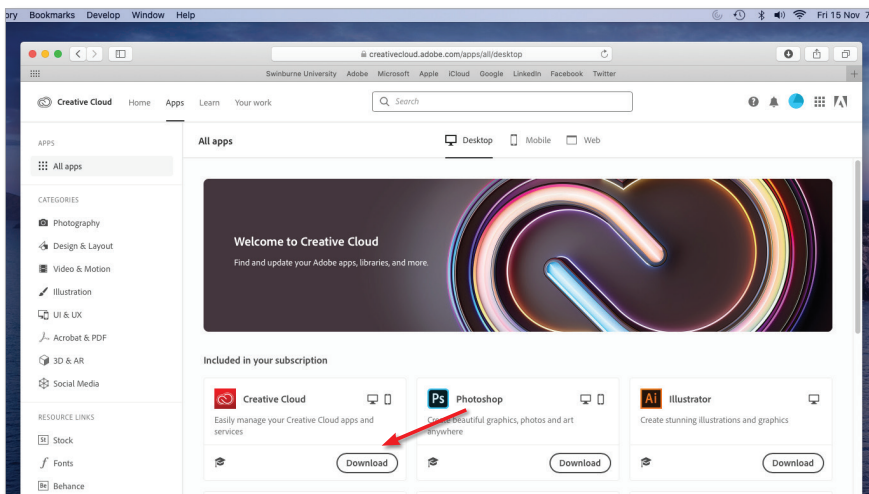
Your Swinburne Office 365 account is now logging into your Adobe account

6

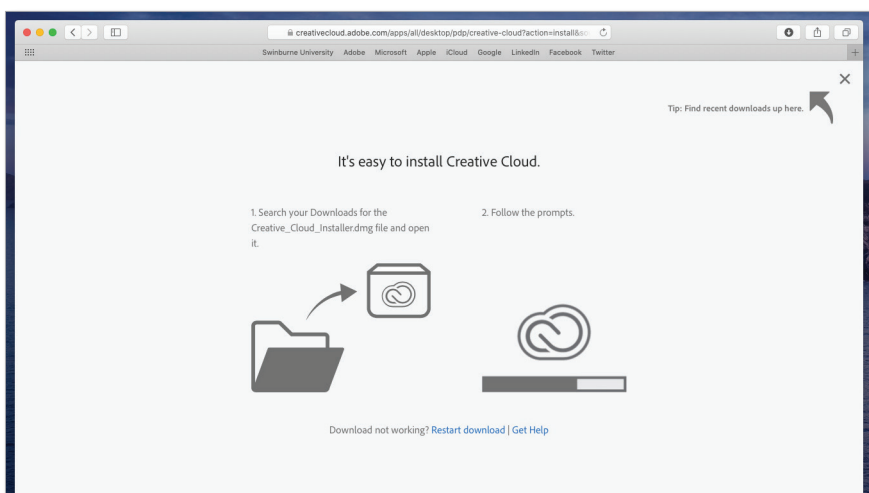


Once you have successfully signed into your Adobe account, click on the **Apps** link

7



Download the **Creative Cloud** application by clicking on the **Download** button



The **Creative Cloud** application will begin. The default location for downloads from the internet is your downloads folder

8



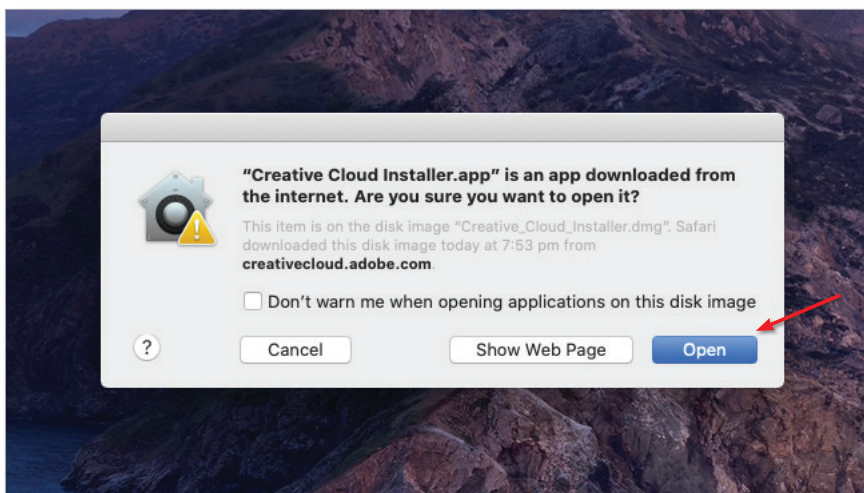
Click on the **Downloads** folder icon in your Dock and click on the **Creative_Cloud_Installer.dmg** file

9



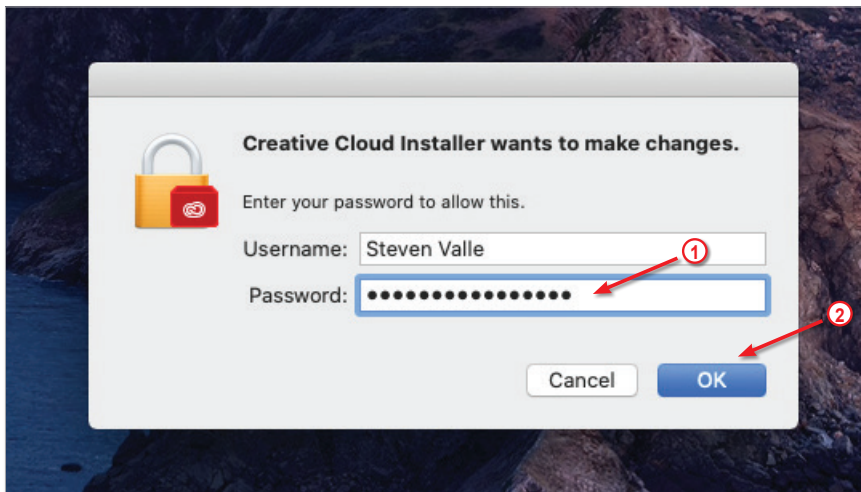
To install the **Creative Cloud Desktop Application**, double click on the **Creative Cloud Installer.app** file

10



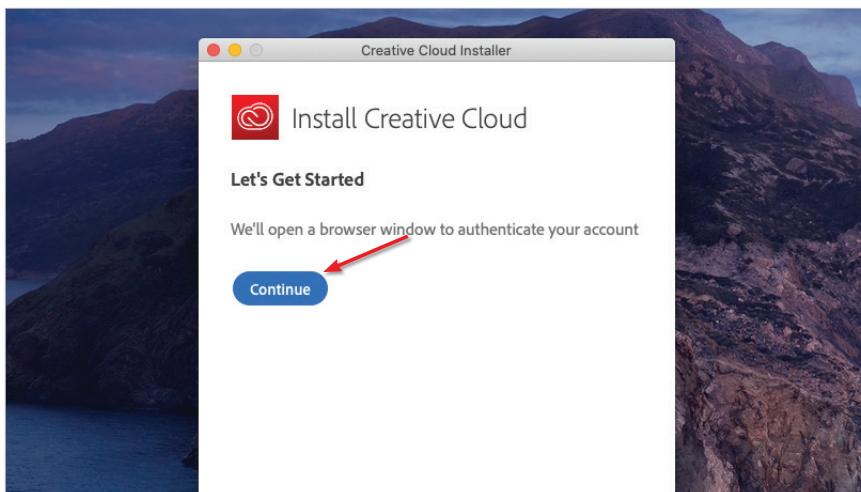
When prompted, click on the **Open** button

11



When prompted, enter your **password** in the field provided and click on the **OK** button

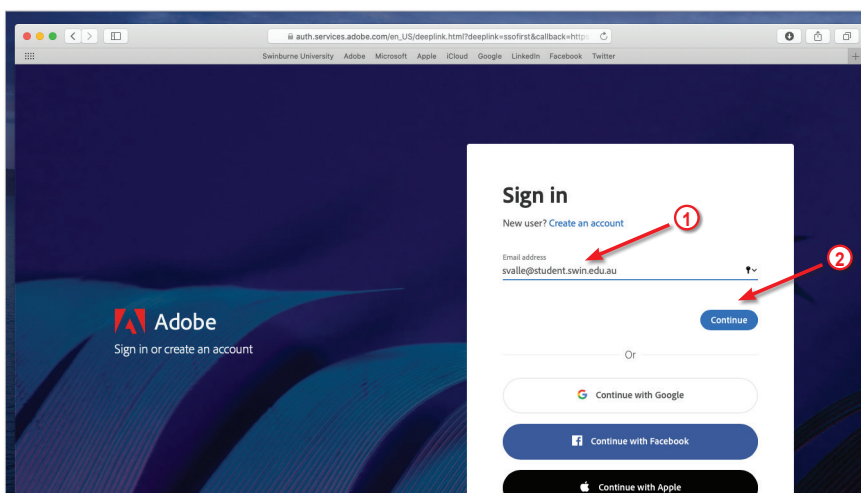
12



Click on the **Continue** button to begin the installation process

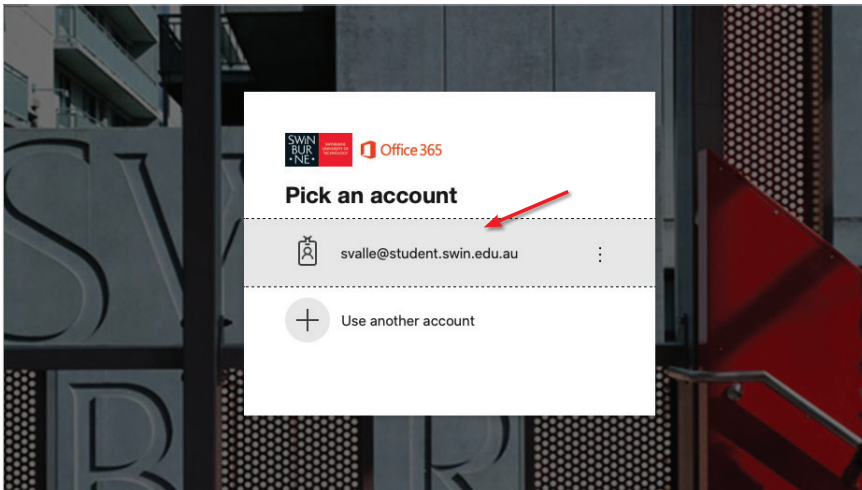
The installer will open a web page and direct you to the Adobe website to sign in again

13



Enter your **Swinburne email address** in the space provided and click on the **Continue** button

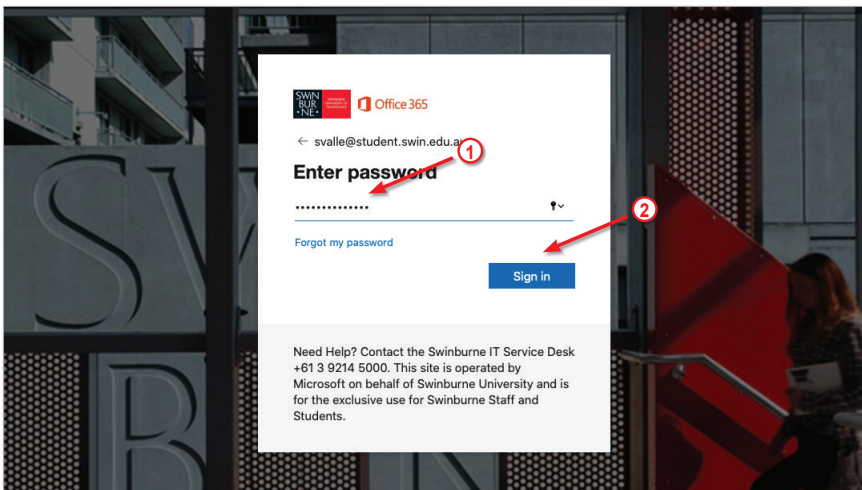
14



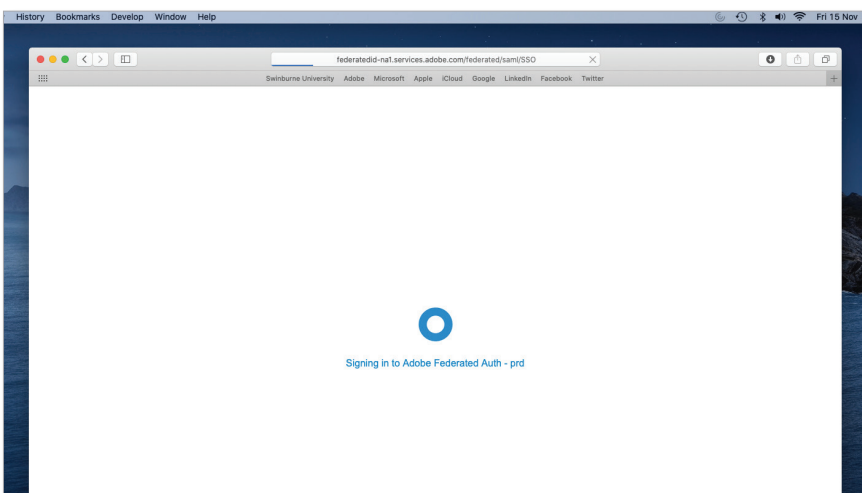
As you have previously signed into your Swinburne Office 365 account, your account will be displayed in the list

Select your account from the list

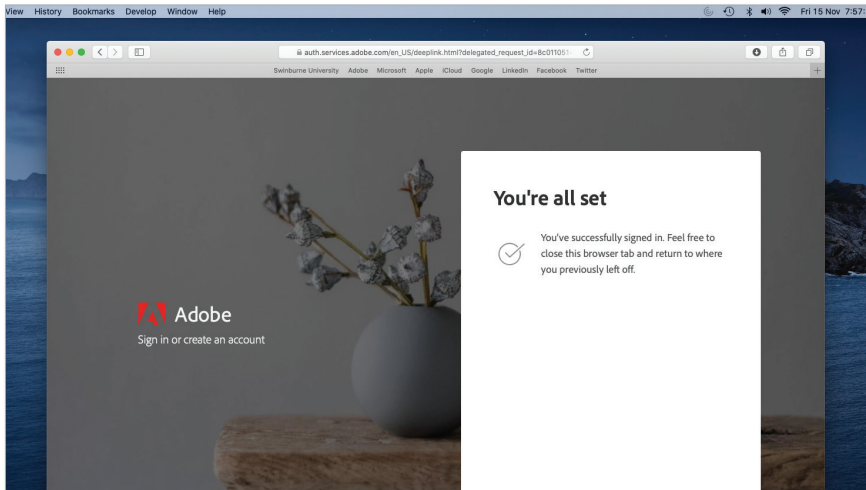
15



Enter your **password** in the space provided and click on the **Sign In** button

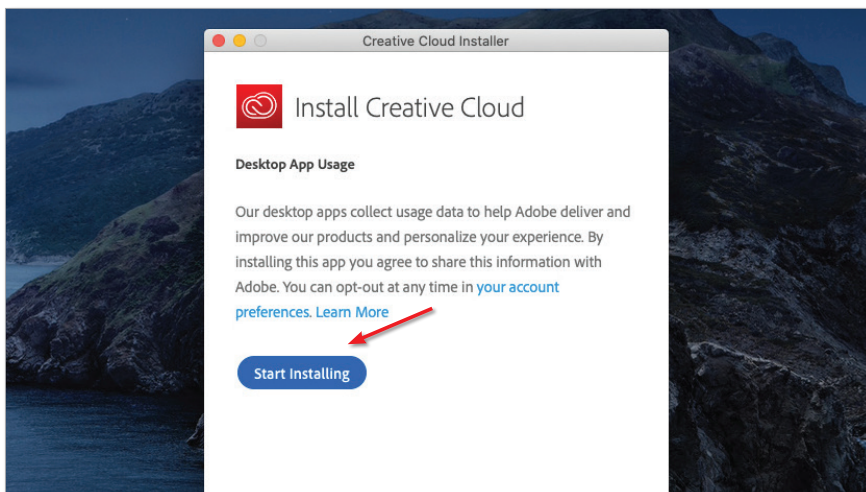


Your Swinburne Office 365 account is now logging into your Adobe account

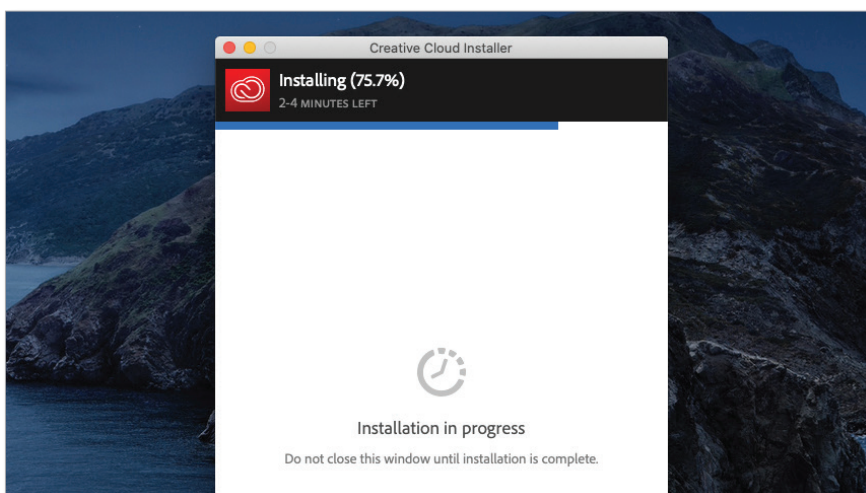


You have successfully signed in to your Swinburne provided Adobe account. Close the browser window to continue the installation process

16

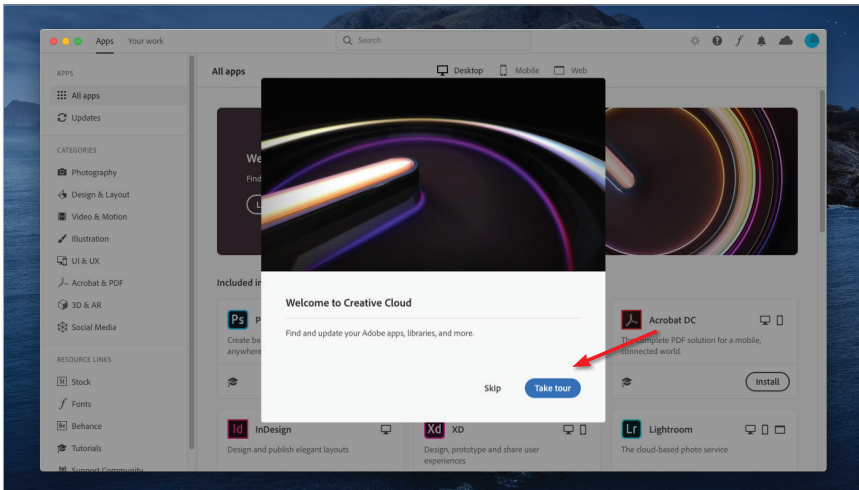


Click on the **Start Installing** button



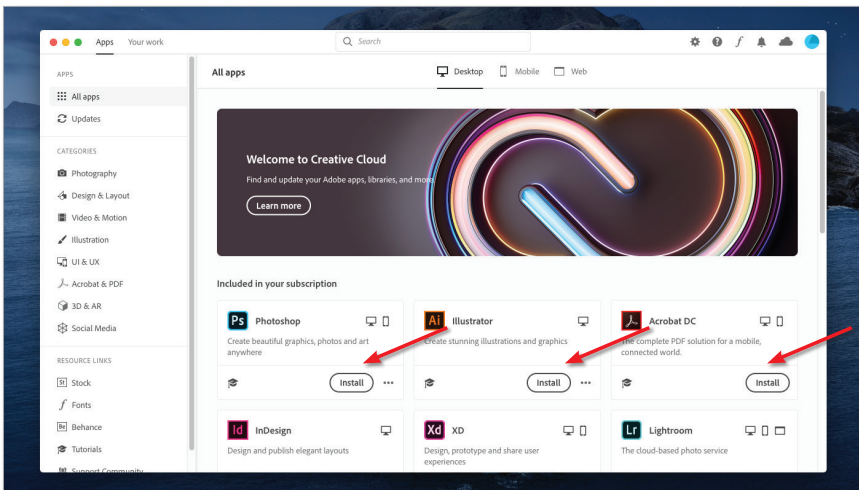
The **Adobe Creative Cloud Desktop Application** will begin installing

17

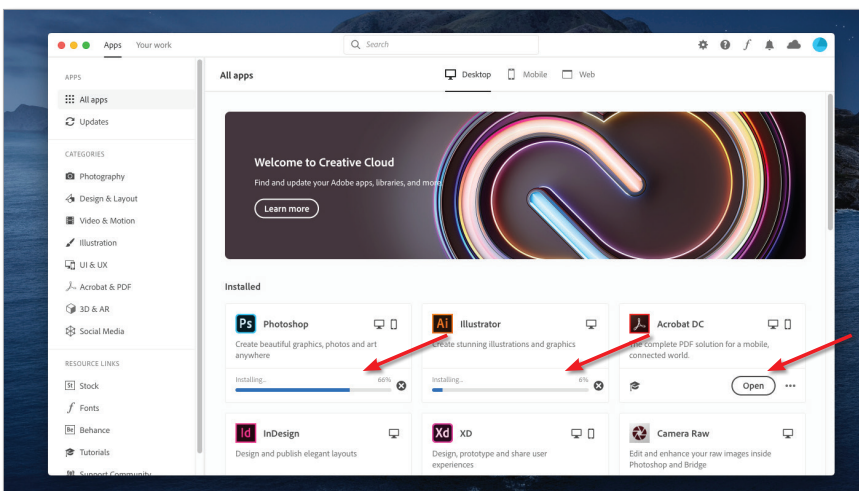


Once the **Creative Cloud Desktop Application** has completed installing, click on the **Take Tour** button for an overview of the **Creative Cloud Desktop Application**

18

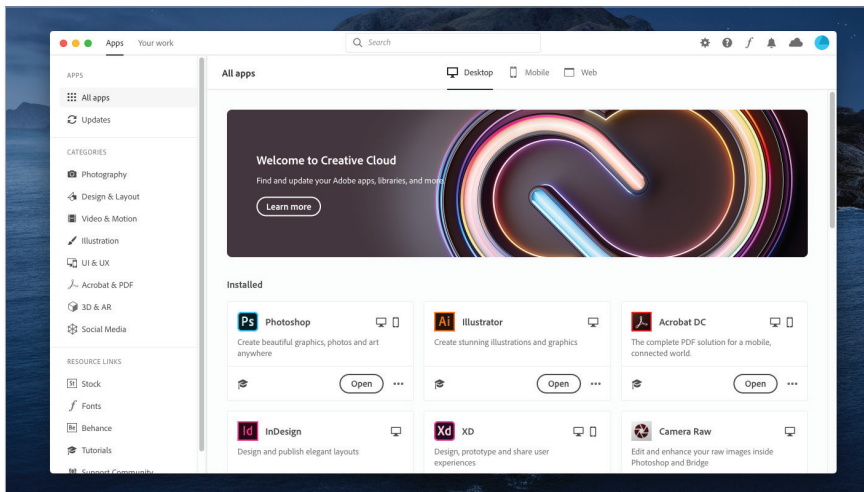


A list of applications available to install is displayed in the window. Select any Adobe application and click on the **Install** button

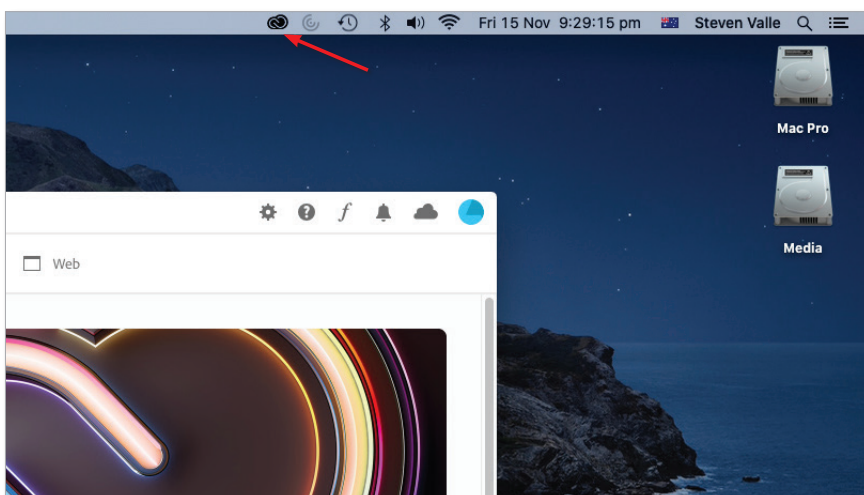
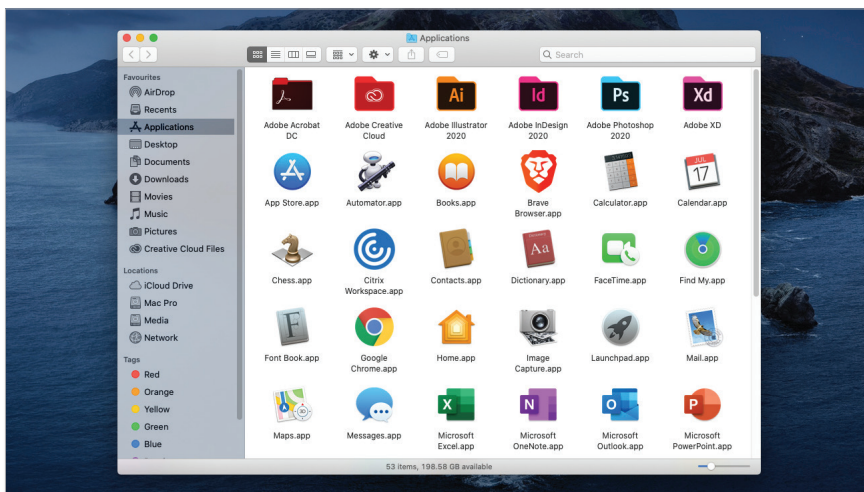


The application(s) you have chosen will begin to download and install

A progress bar will provide you with an estimated time to completion. Once completed, an **Open** button will appear



Installation has now completed on your chosen application(s) and can be found in your Applications folder



The **Adobe Creative Cloud Desktop Application** can be found in the menu bar of your Mac

Clicking on the icon in your menu bar will open the Creative Cloud Desktop Application